

XIZI 西子电梯

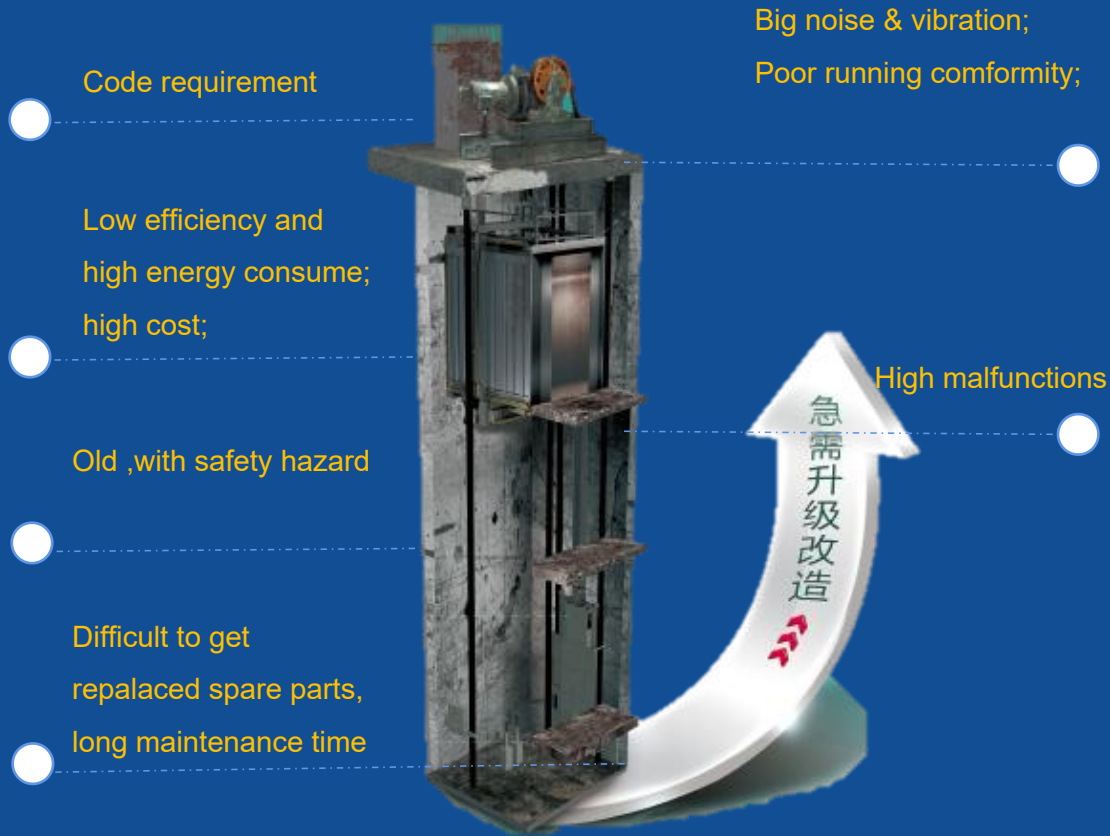
**Modernization Introduction
- XIZI ELEVATOR**

-  **Design & Manufacturing -- R & D for elevator**
-  **Installation and adjustment -- Engineering & Installation**
-  **Elevator Running and Maintenance -- Maintenance**
-  **MOD AND UPGRATDING -- Modenization**
-  **Scrap & Recycling**

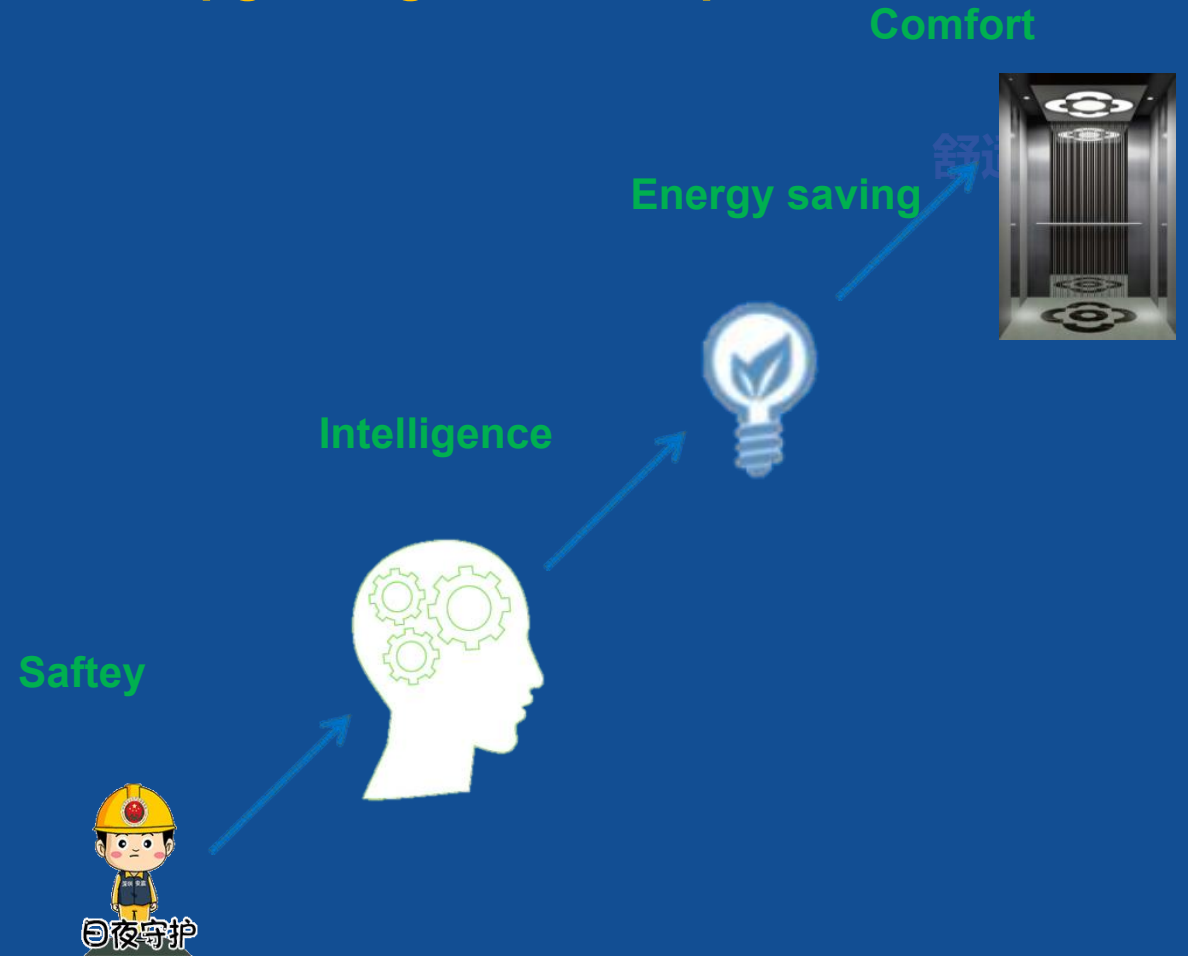
XIZI Elevator provides you full lifecycle service for elevator;

Why Modification

Situations for modification:



Upgrading on four aspects:



Meet custimized requirements for different customers

▶▶ Package A

Electrical system MOD:

Replacing controller and related electrical parts;

Benefits:

Economic, short lead time;

Energy saving > 30%;

Reduce malfunction rate;

▶▶ Package B

Electrical, machine, door operator MOD:

Controller, machine(including steel rope, etc.), door operator, etc.

Benefits:

Reduce maintenance cost;

Improve safety property;

▶▶ Package C

Keep Basic:

Keep guiderails, bearing beam, CWT, landing door, car frame(options):

Benefits:

Energy saving;

Comfort and modern;

More safer;

Package N ...
Customized solution

Various Combination

Pacakage	Control system	Door System	Machine	Steel rope	Deflector Sheave	Speed governor, safety gear, car decoration
Package 1	●	●	●	●	●	◐
Package 2	●	●	●	●	◐	◐
Package 3	●	●	●	◐	◐	◐
Package 4	●	●	◐	◐	◐	◐
Package 5	●	◐	◐	◐	◐	◐

Remarks:

Local code requirement and inspction requirement shall be paid attention.

Control system: Controller, cable carton, electrical carton, door motor, door inverter, light curtain, weighing device;

Machine: Machine, encoder wiring, machine cover, machine bedplate including deflector sheave;

Car decoration: Cabins, ceiling, floor (by customer for marble floor);

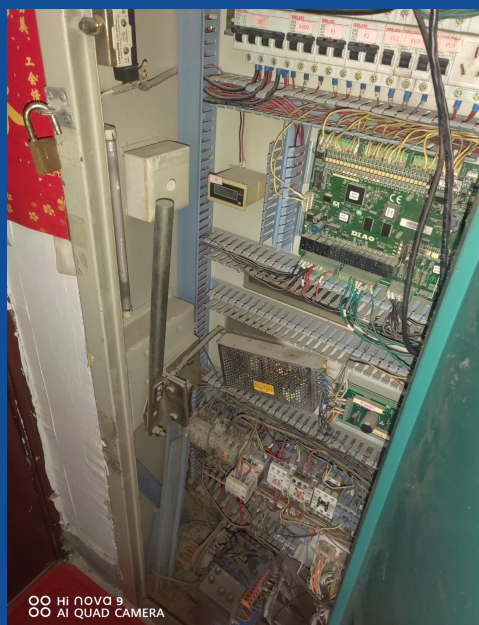
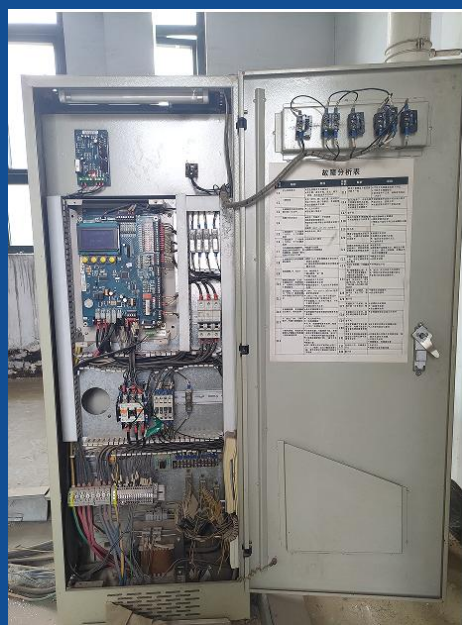
Modernization Solution- Control system

Before

After

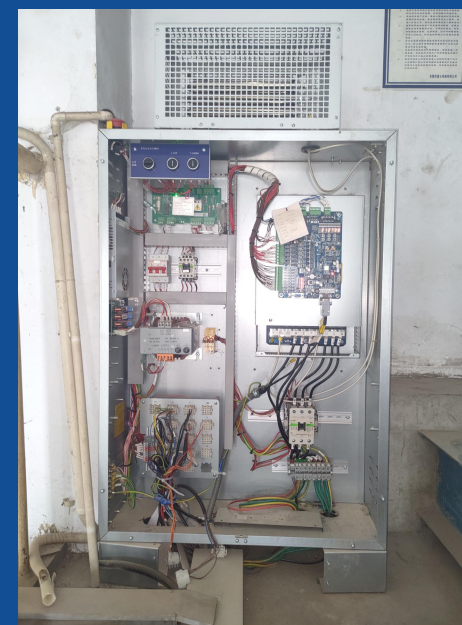
MR controller

MRL Controller



MR controller

MRL Controller



Modernization Solution - Interface

XIZI 西子电梯

COP



U-CY100
Integrated

U-CF1200
Separate

U-CF6900
Cabin hanged



6.4'iLED

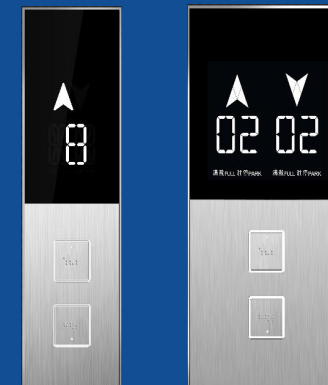


Dancing wind
7'TFT



Red phantom 7'TFT

LOP



U-ZW1600
bottomless

U-ZW7400 big size LOP

480*120*15

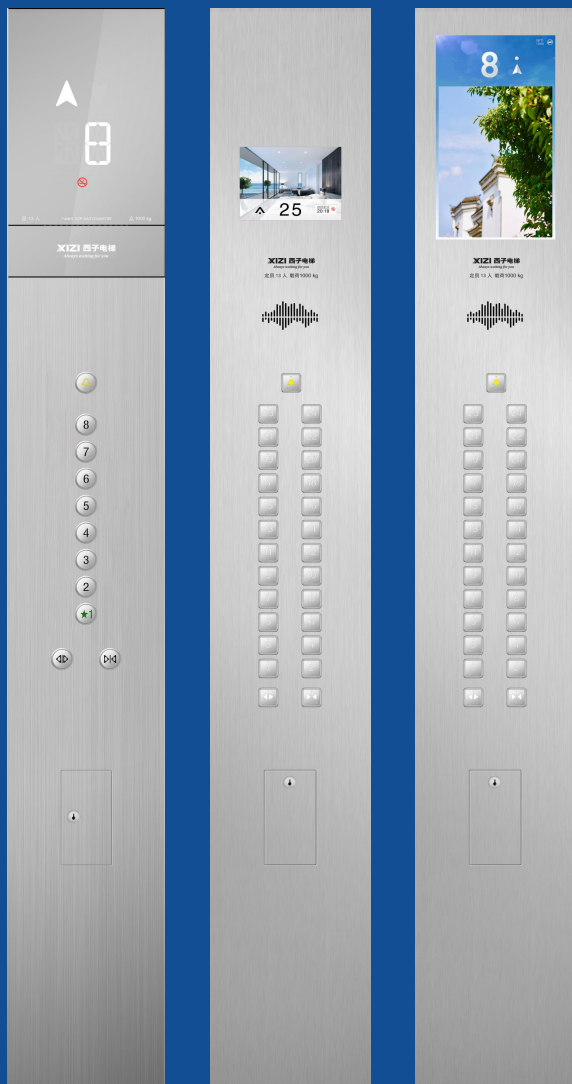
(Solution for original LOP with bottom
box)



Modernization Solution - Interface

XIZI 西子电梯

COP



Dancing wind
10.4/12.1'TFT



Red Phantom
10.4/12.1'TFT



Scientific Phantom
18.5'TFT



Cloud & Wind
18.5'TFT

LOP



U-ZW3410-A|B|C|D
Bottomless



U-ZW7300
Black transparent glass
480*120*15



4 in 1 Intelligent Control

Modernization Solution - COP

XIZI 西子电梯

Before

After

COP with bottom box

Integrated COP

COP with bottom box

Cabin hanged COP



Modernization Solution - LOP

XIZI 西子电梯

Before

After

Bottomless LOP

LOP with bottom box

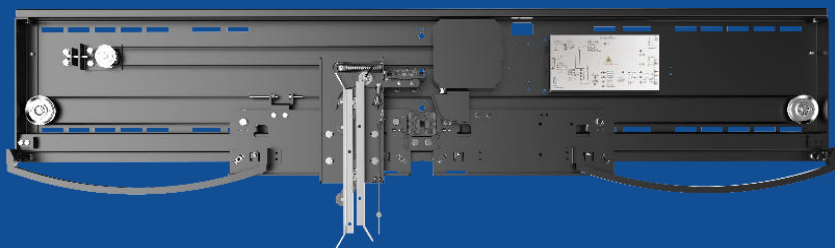
Bottomless LOP

LOP with bottom box



Modernization Solution - Door System

Covering various elevator brands' door system; meet 90% market modification requirement;



Brand	OE	OECC	TK	H	K	SG	S	M	FJ	XO
Door operator	DO3000	MRDS	K8	KS-51L	ADM	MS	V30	TKP-161	FJT01	Easy-con
	DO2000	DO2000	K9	DK-RSL	AUGUSTA	LG	V35			
	NGSOK	AT120	K300	MS						
	AT120 AT400	OVL	F9							
	XRDS	9550								

More precise

- VVVF control
- Closed-loop vector control
- Real time speed feedback
- Speed regulation accuracy reaches 0.1%

More reliable

- Design verification using finite element analysis
- Tested under severe abnormal conditions
- Door motor IP rating reaches IP54
- Reliability verified through 3 million operation cycles

More adaptive

- Wide input voltage design
- The design allows input voltage fluctuations of $\pm 20\%$
- Limited resistance to various complex environmental conditions

Modernization Solution - Door System

XIZI 西子电梯

Before

After

Electrical part

Electrical parts Upgrades

Electrical part

Electrical parts Upgrades



Car door upgrades

Car door upgrades



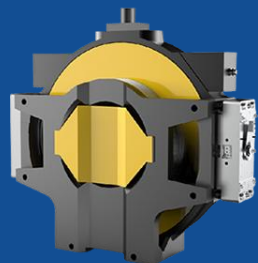
Modernization Solution - Machine

XIZI 西子电梯

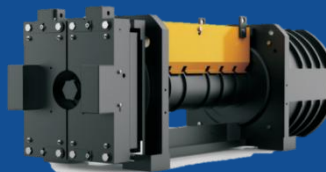
High speed machine



Thin machine



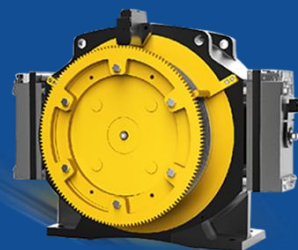
Belt machine



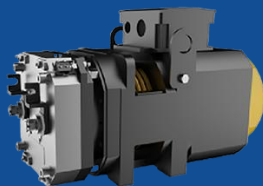
Bar machine



Passenger machine



Homelift machine



	XIZI	Normal
Dust and water resistance class	IP41	IP2X~IP40
Braking torque	200%	125%
Magnetic flux Tolerance	±1%	±3%
Magnet heat resistance	180°C	150°C
Rope ratio	1:1/2:1	
Dutyload	320-2000kg	
Speed	0.4m/s-7m/s	

Our machine factory has more than 20 years' manufacturing experiences;
Annual sales quantity: 250,000 units gearless machine;
All components including casting, magnet, wiring, encoder etc. is made by ourself;
It is Top 1 biggest gearless machine factory in the world.

Modernization Solution - Machine

XIZI 西子电梯

Before

After

2:1 machine

1:1 machine

2:1 machine

1:1 machine



Modernization Solution - Cabin

XIZI 西子电梯

Std.



U-CR172



U-CR130



U-CR147



U-CR028



U-CR078



U-CR149

Option



1

Ceiling: Powder-coated steel;
 Lighting: 4 downlights, concealed strip lights'
 Wall panels: Wood-grain art steel panels+antique bronze art steel panels



2

Ceiling: Moonlight White art steel;
 Lighting: Ceiling linear lights, back wall light strips;
 Cabin: Pearl Ink art steel plate+Moonlight White art steel;
 Kick plate: Pearl Ink art steel;



3

Ceiling: Mirrored stainless steel;
 Lighting: Acrylic panel lights;
 Cabin walls: Gray-silver matte metal panels+rear central wall mirrored stainless steel;

Modernization Solution - Intelligence upgrades

XIZI 西子电梯



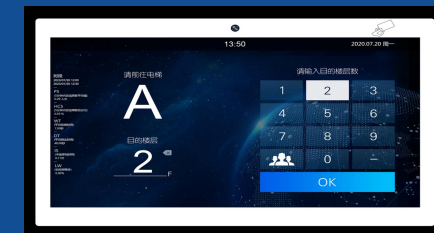
Face Identification



ARD Automatic Rescue Device



Destination Dispatching Control System



15.6' touch annunciator



4 in 1 Intelligence Control

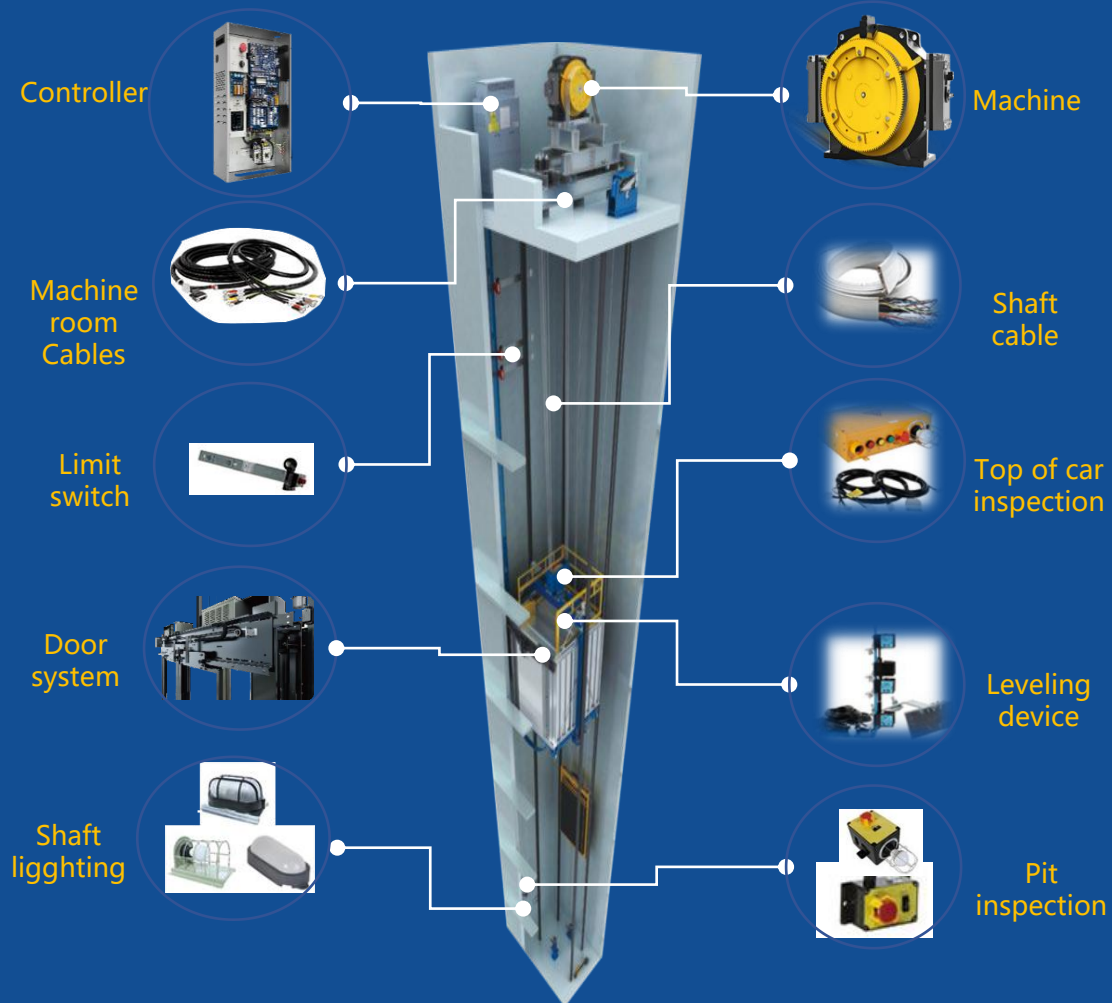


Energy Saving Cabinet (including ARD function)



24' Horizontal Display

Core components + One Stop Service



- All core components are self-made;

- We provide modernization solution for MRL and small machine room elevators;

- We provide one stop solution services, not only on products, but also site training & support modifications;